

Samitech EcoWood is a portable microwave solution against xylophages.

Microwaves penetrate deep and quickly into wood and kill insects in any life stage, from egg to adult.

EcoWood version two is lighter and easier to operate than ever thanks to the new touch screen digital remote control.



Data sheet

Microwave power	1000W	
Treatment area	30 x 20 cm	11,81 x 0,78 in
Dimensions (main unit)	32,5 x 25 x 25 cm	12,8 x 9,8 x 9,8 in
Dimensions (ready to use)	60 x 32,5 x 30 cm	23,6 x 12,8 x 11,8 in
Weight (ready to use)	7,9 Kg	17,4 lbs
Remote control	4,3" handheld touch screen with emergency stop button	
Remote cable length	12 m	13,1 yd
Input Power	220-240V -50Hz 1500W Max 1500W	
Packaging	Corrugated cardboard	
Dimensions	80 x 60 x 50 cm	31,5 x 23,6 x 19,7 in
Net weight	8,5 Kg	18,13 lbs
Total weight	9,9 Kg	21,82 lbs
Cartons per EU pallet	4 boxes	
Country of origin	Spain	
HS code	84198998	

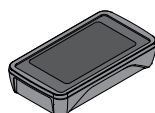
Box contents

- Main unit
- Remote control
- Connection cable
- Power cable
- Microwave leakage detector
- Carrying case

Parts and accessories



Main unit with antenna



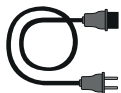
Remote control



Microwave leakage detector



Carrying case



Power cable

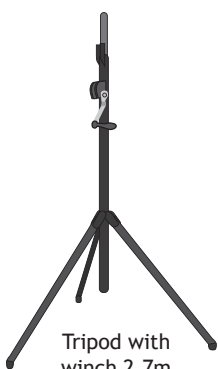


Connection cable



Documentation

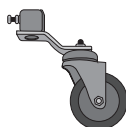
Extras



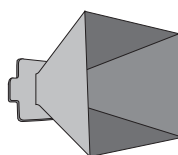
Tripod with winch 2,7m



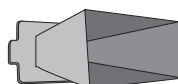
Main unit articulation



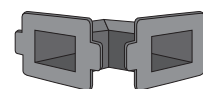
Wheel set



Antenna 30x20cm



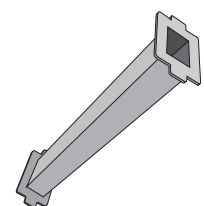
Antenna 30x10cm



Horizontal bend



Vertical bend



Extender 40cm