



Heat Wrap

SAMiTECH

*Portable and flexible Heat Treatment
solution for wood*

Heat Wrap

Actually, heat treatments comes with high costs in manpower, logistics, energy consumption...



Heat Wrap

Heat Wrap is the physical solution against xylophages in all stages for any kind of wood.

Contrary to chemical treatments in wood, **Heat Wrap** is a cure against pests, it does not damage the treated object and don't require a previous adjustment (laxed or removed from lacquer) for its application.

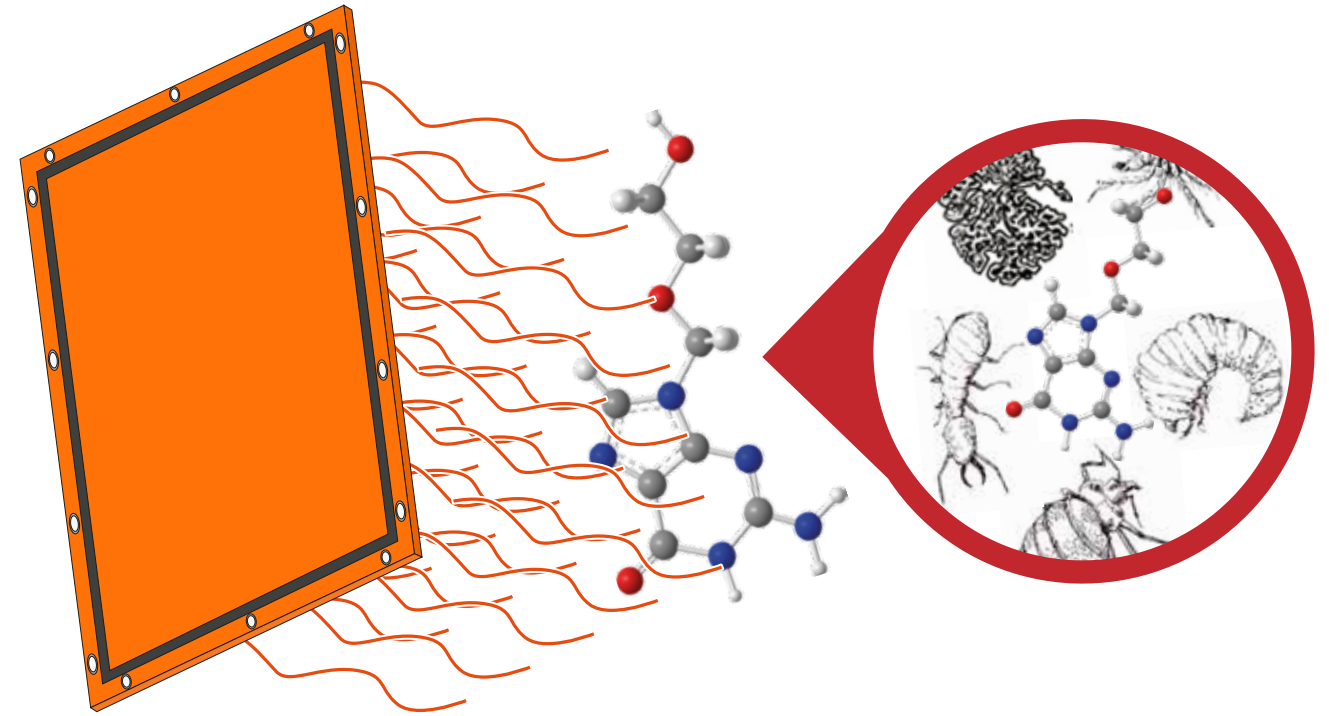


Heat Wrap

Heat Wrap is based in **Samitech** far infrared intelligent heating technology.

The far infrared waves radiated by each panel penetrate the wood surface and directly attack the protein cells of the insects, causing their death by dehydration.

This physical process does harm treated objects.



A light, flexible and durable nano-technological fabric, designed for industrial use that produces far infrared waves.

Heat Wrap

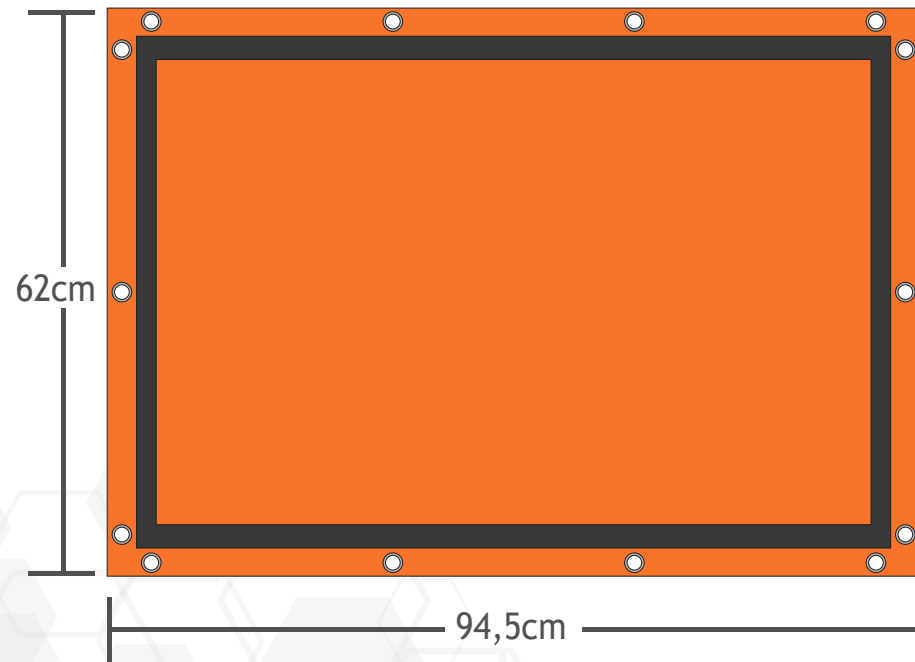
Heat Wrap set includes 6 flexible panels that adapt to any shape, either wrapping around an object, or joining to cover large surfaces. Panels can be fixed onto different wooden structures by using screws, ribbons, ropes, etc.



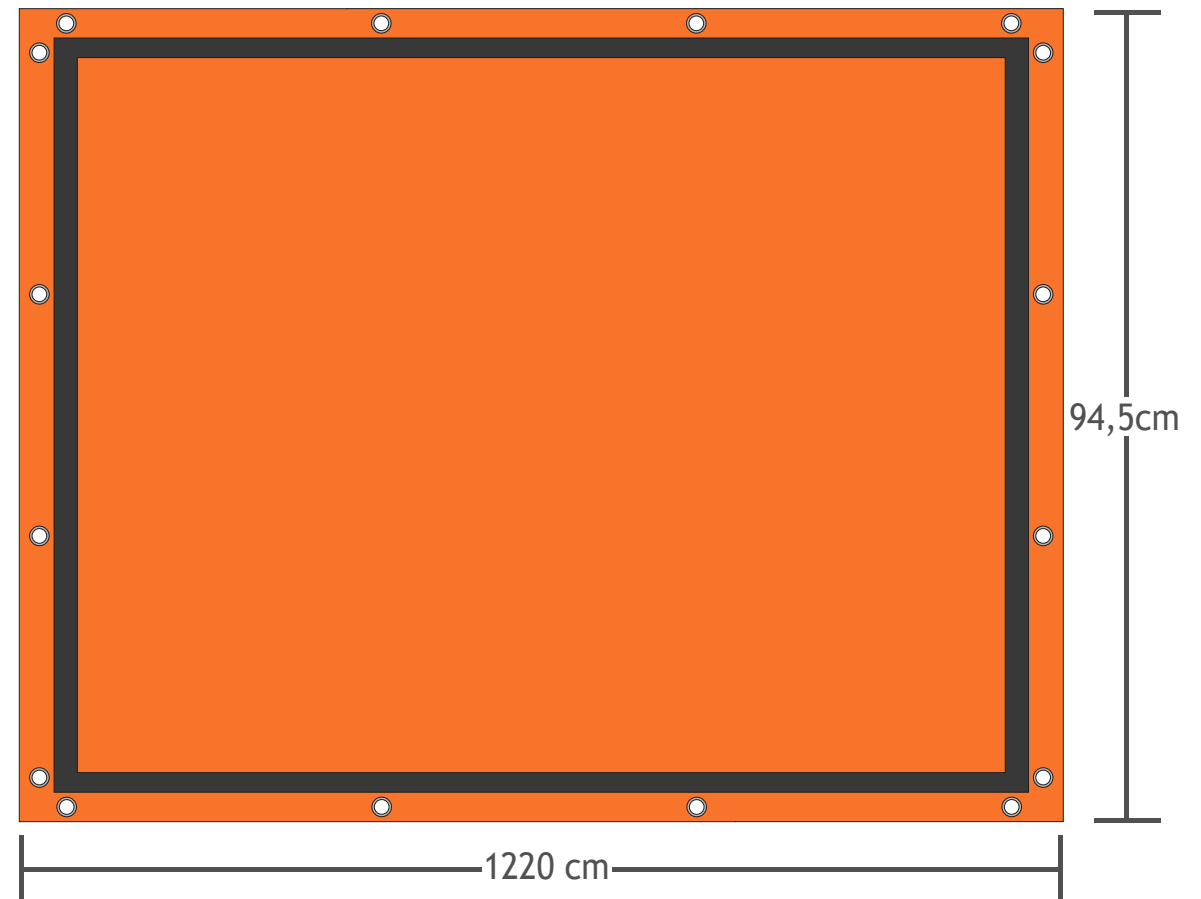
Heat Wrap

Dimensions: Two different models to meet the needs.

Heat Wrap



Heat Wrap XL



The new Heat Wrap XL is designed for large surface treatments.

Heat Wrap



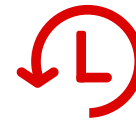
Only one operator needed.
Light, foldable, quick and
easy to assemble.



One single power outlet
socket. Effective and low cost
equipment.



So flexible and adaptable
modular set that can easily
adjust to any object shape



Intelligent control system
Remotely managed real-time.

Applications



Wood columns
Beams



Doors
Windows



Furniture



Shelves
Bookstores



stairs
handrails

Heat Wrap

The user Interface is simple and intuitive, With it the operator es able to choose, verify the safety guidelines and monitor de treatment to be done.



- ✓ The heat treatments are managed and monitored in real-time using a lightweight touch-screen 7" tablet included in the kit.
- ✓ The interface is totally intuitive and user friendly.
- ✓ The operator can define the treatment temperature and duration, and monitor it at any time.
- ✓ The user interface asks both the costumer and the PCO to check the safety guidelines before starting a treatment.
- ✓ When the treatment is completed, a full report is generated including all treatment details, the pictures taken to objects and even estimated energy consumption and cost.
- ✓ The PDF report can be easily shared with the costumer by email.

Heat Wrap

Once the treatment is finished, the system generates a **personalized PDF report** that can be emailed to the client.

The report includes:

- ✓ Data of the treatment performed (duration, temperatures, energy, kind of pest, etc...)
- ✓ Identification of both: The client and the operator (Company).
- ✓ Photographs of objects before and after the treatment.
- ✓ Energy consumption.

Heat Wrap SAMITECH

Settings

Temperature units: Celsius °C

Currency: \$ Currency format: \$1,000.00

Price per kWh: 0.13

Company logo:

Company details: My Company Inc., 123, My Street, My Town, Planet Earth

20190826104403_Test 02.pdf

my Company

My Company Inc., 123, My Street, My Town, Planet Earth

Treatment details

Report #201908261044
Date: 26/Aug/2019
Technician: Henry
Job description: Test 02
Target species: Blood feeders
Treatment temperature: 85°C
Treatment duration: 10 Min

Client details

aaa

Verifications

Advisory notification confirmed by the client: Yes
Verification statements confirmed by the technician: Yes
Signature: Henry
Comments:

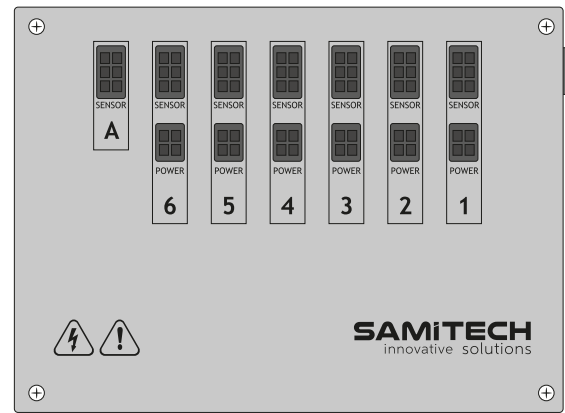
Time report

Process start time:	10:25
Confirmation by the client:	10:26
Verifications by the technician:	10:26
Pictures taken before treatment:	10:26
Heating start time:	10:26
Treatment start time:	10:26
Treatment end time:	10:36
Total time elapsed:	11Min
Pictures taken before treatment:	1899Wh
Total energy consumption:	90.25
Estimated energy costs:	
The treatment finished successfully.	

Save changes

Heat Wrap

1. Control Box Unit



2. User Interface



3. Take pictures to objects before and after treatment



4. Treatment monitoring



5. Exhaustive Report



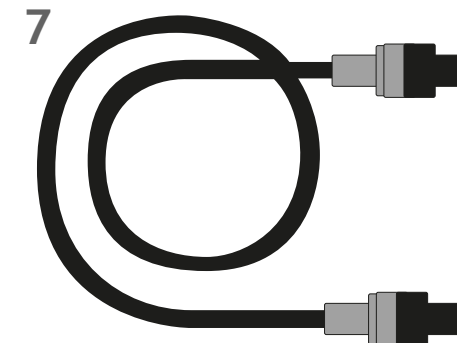
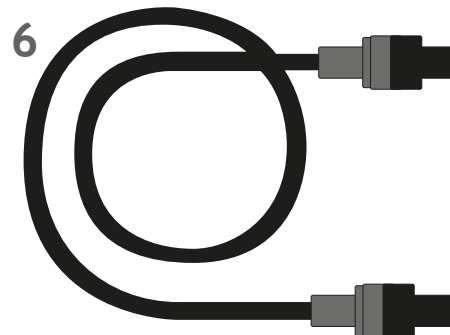
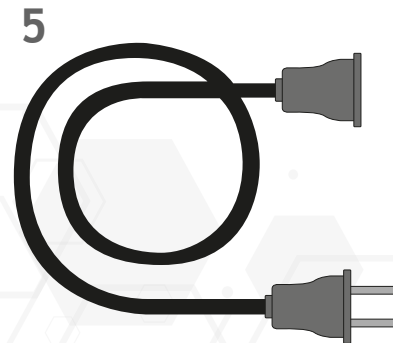
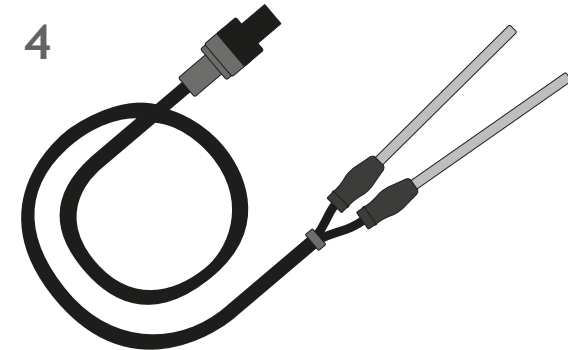
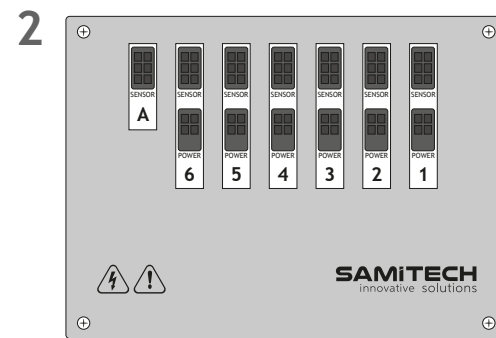
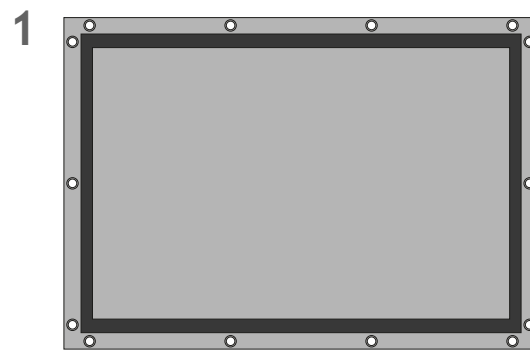
6. Share or send to client



Heat Wrap

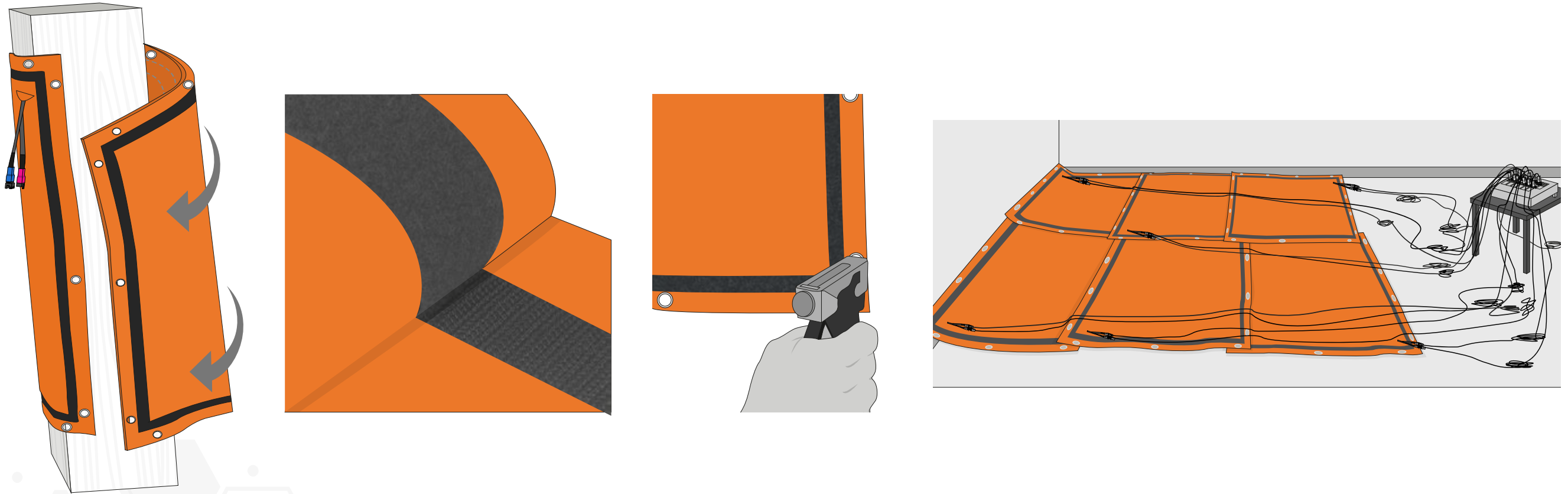
Components and accessories

1. Heating panels (x6 units)
2. Control Unit Box
3. 7" tablet user Interface
4. Temperature Probes
5. Power Cord
6. Power Cables (x6 units)
7. Data cables (x6 units)



Heat Wrap

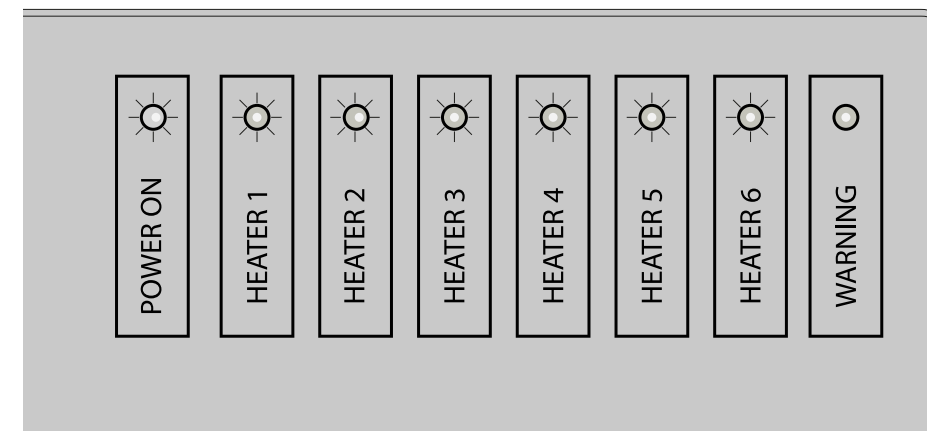
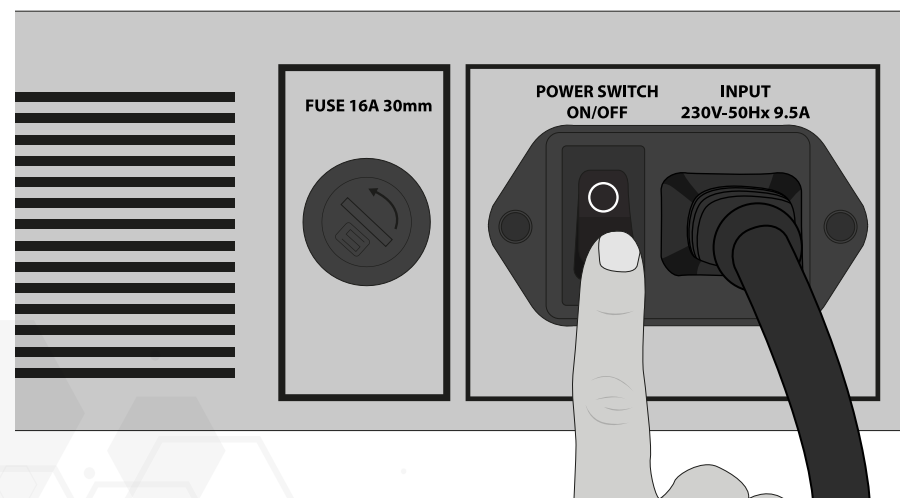
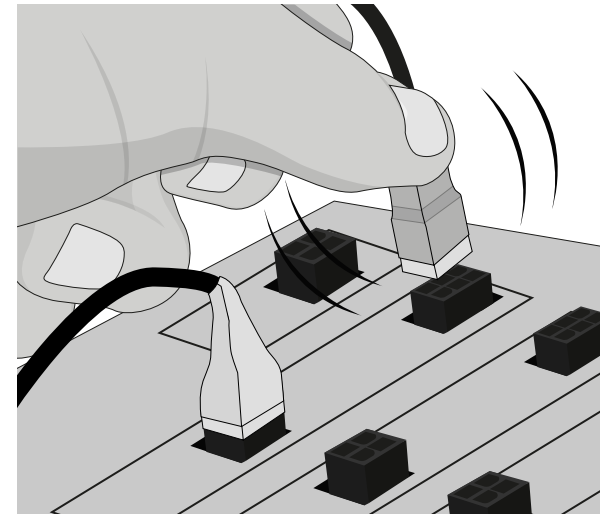
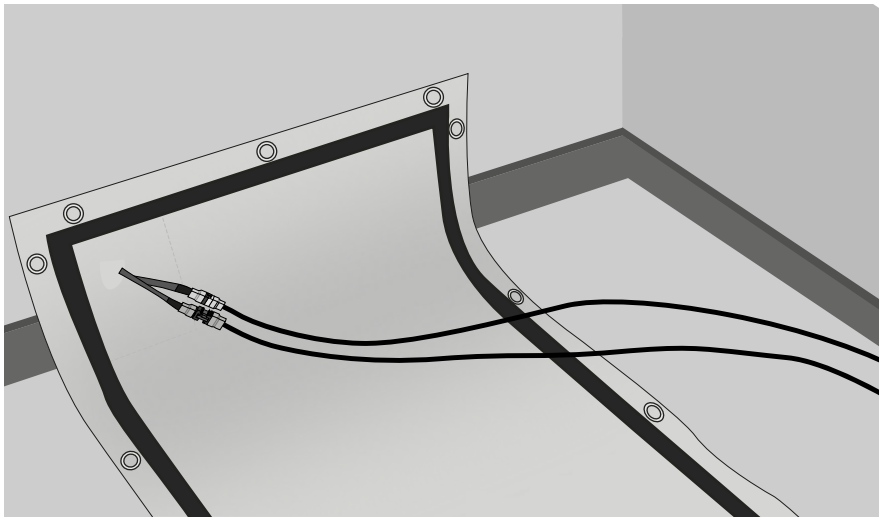
Easy to use - Operation steps



Panels can be fixed onto different wooden structures by using screws, ribbons, ropes, etc. Every heating element is made of a strong and durable material and has a industrial grade Velcro tape all around the perimeter and multiple eyelets for easy fixing to wood or attaching to itself or the other panels. This allows creating any custom shape needed.

Heat Wrap

Operation steps conections and set up.



Heat Wrap



Heat Wrap



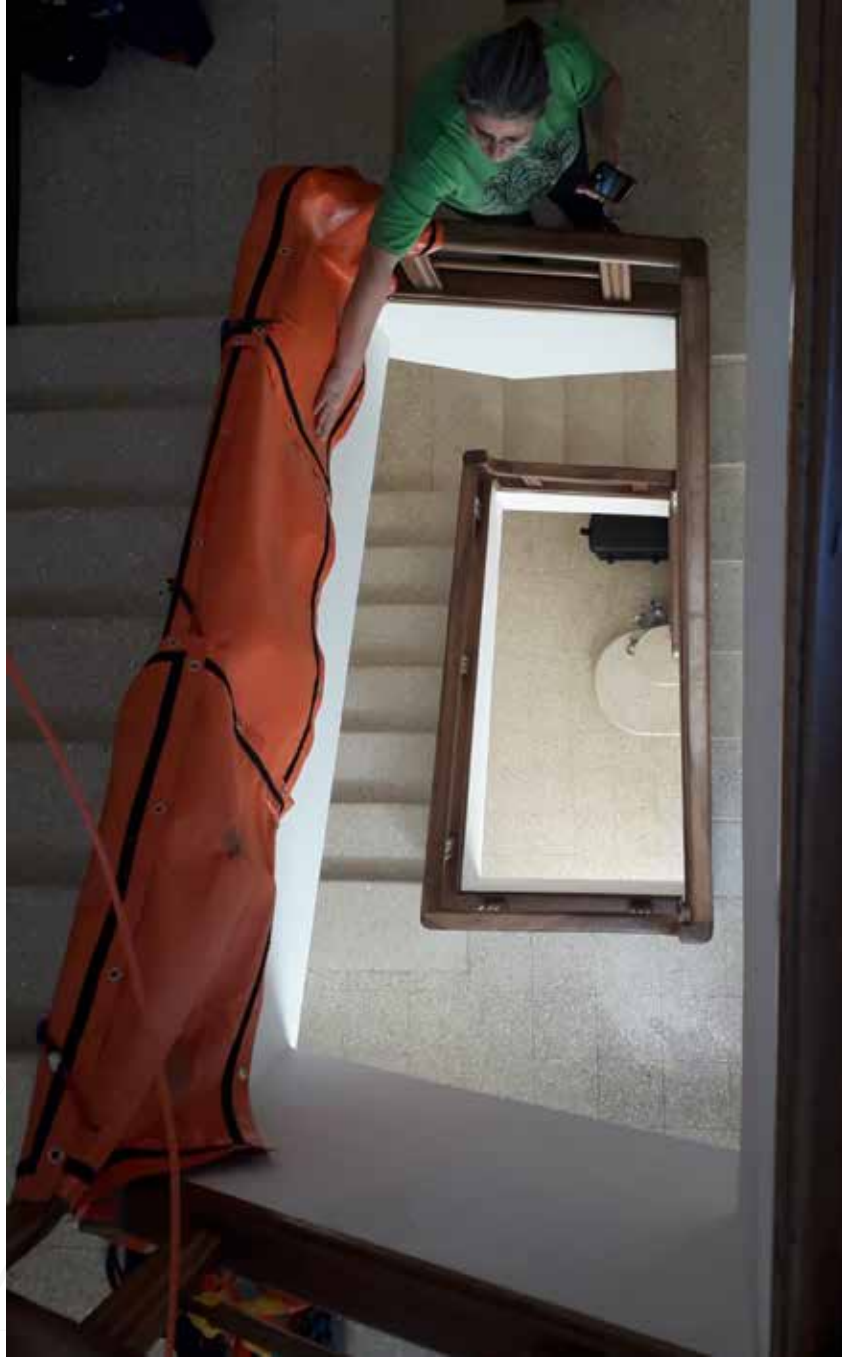
Heat Wrap



Heat Wrap



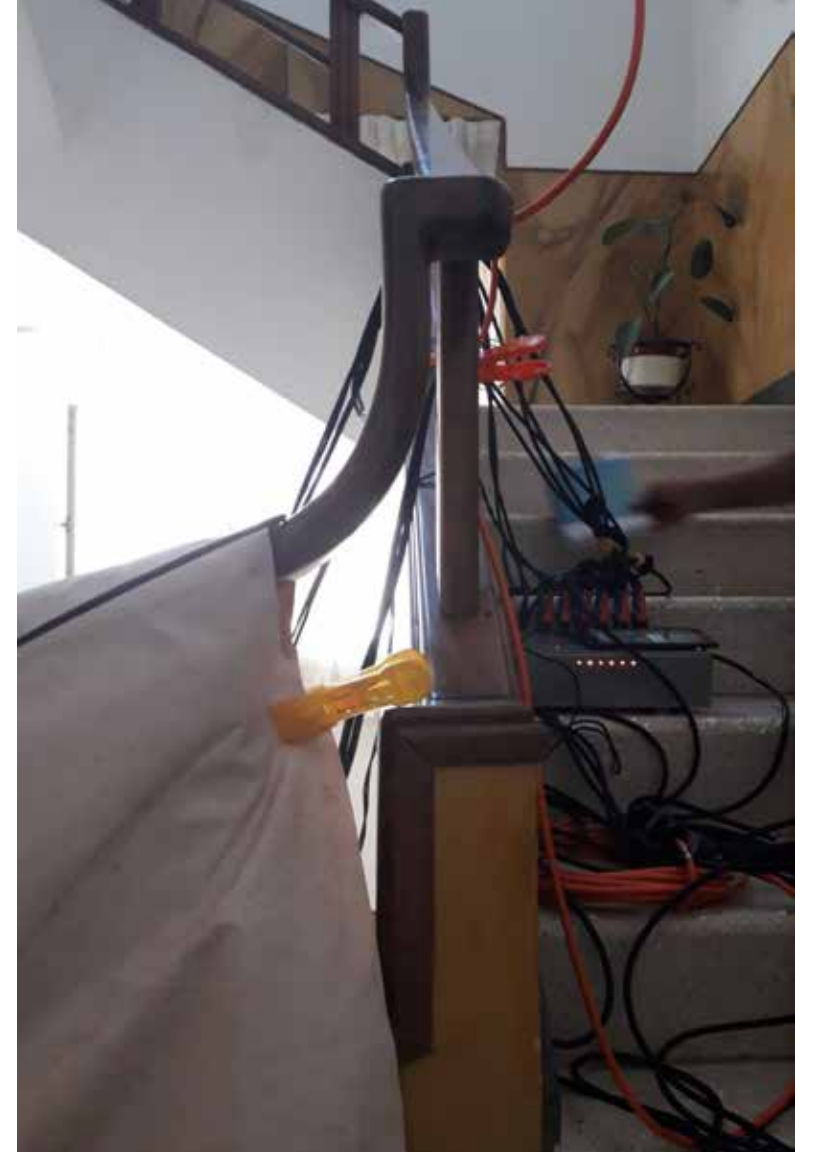
Heat Wrap



Heat Wrap



Heat Wrap



Heat Wrap



Heat Wrap



Heat Wrap



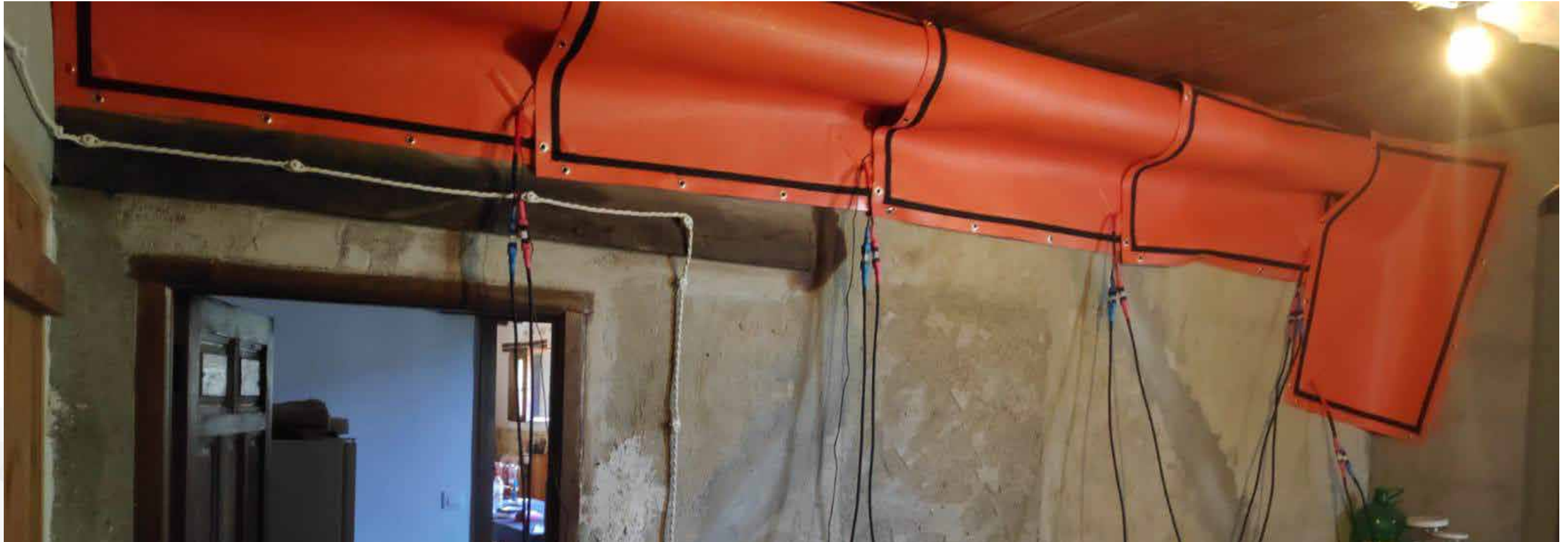
Heat Wrap



Heat Wrap



Heat Wrap



Heat Wrap



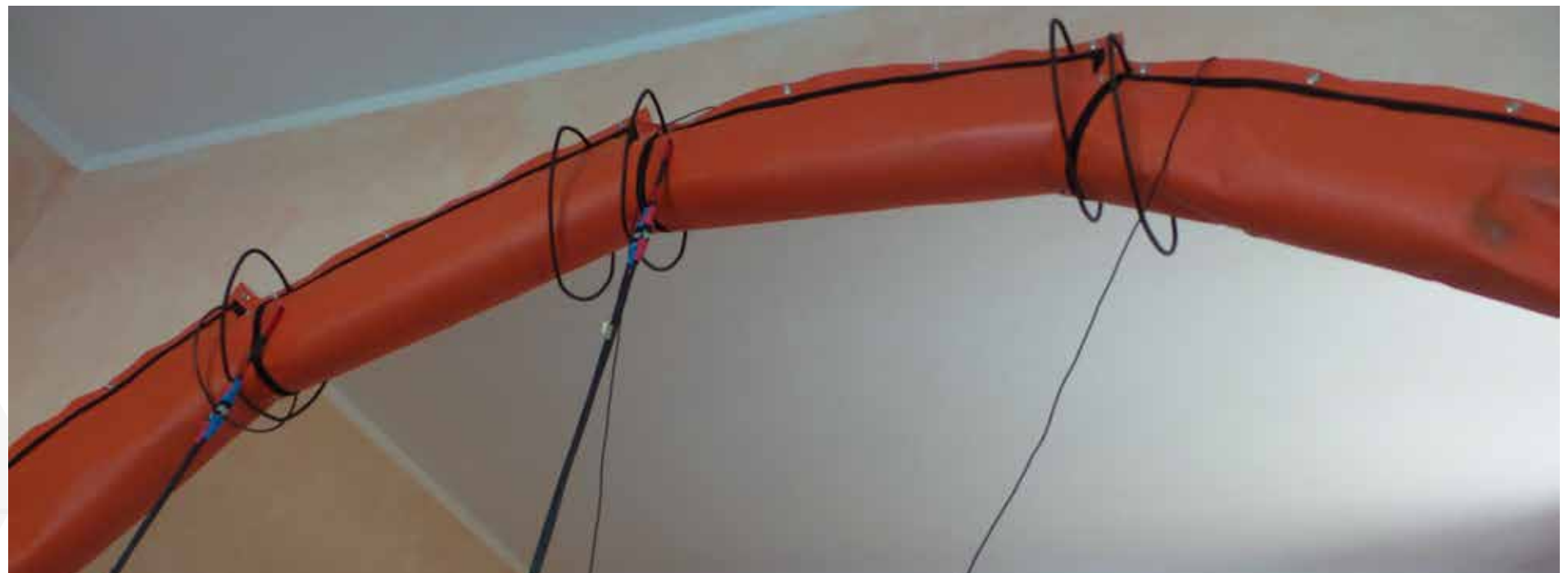
Heat Wrap



Heat Wrap



Heat Wrap



Heat Wrap



Heat Wrap



Heat Wrap



Heat Wrap



SAMITECH

Headquarters

C/ Gabriel Lobo 5
28002 Madrid
SPAIN

Manufacturing Plant

C/ Charles Darwin 6-C
Alcalá de Henares
28806 Madrid
SPAIN

www.sami.tech